



PORT CITY ARCHITECTURE

65 NEWBURY STREET
PORTLAND, ME 04101
207.761.9000



Consultants:

PARAPET & ROOF PERMIT SET

NEWPORT DEVELOPMENT ASSOCIATES

164 Middle St
Portland, Maine

| # | DATE | DESCRIPTION |
|---|------|-------------|
| | | |
| | | |
| | | |
| | | |
| | | |
| | | |
| | | |
| | | |
| | | |
| | | |

Date Issued September 30, 2016

Project Number 16201

Drawing Scale AS NOTED

EXTERIOR ELEVATIONS

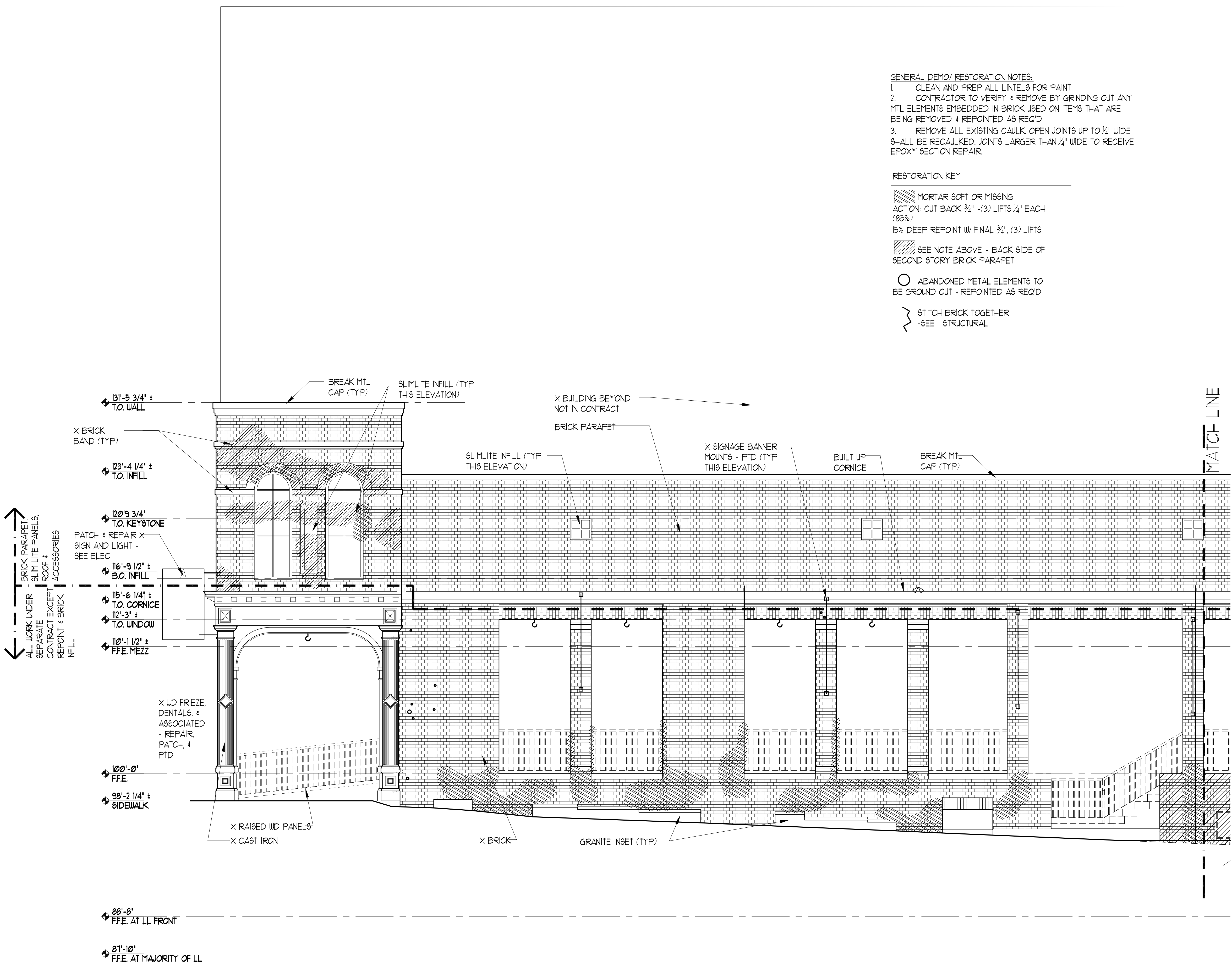
Drawn By
J.P. CM
T.S. CR
Checked By
L.A.S.

A2.3

- GENERAL DEMO/ RESTORATION NOTES:
- CLEAN AND PREP ALL LINTELS FOR PAINT
 - CONTRACTOR TO VERIFY & REMOVE BY GRINDING OUT ANY MTL ELEMENTS EMBEDDED IN BRICK USED ON ITEMS THAT ARE BEING REMOVED & REPOINTED AS REQ'D
 - REMOVE ALL EXISTING CAULK. OPEN JOINTS UP TO 1/2" WIDE SHALL BE RECAULKED. JOINTS LARGER THAN 1/2" WIDE TO RECEIVE EPOXY SECTION REPAIR.

RESTORATION KEY

- MORTAR SOFT OR MISSING
ACTION: CUT BACK 3/4" - (3) LIFTS 1/4" EACH (85%)
- 15% DEEP REPOINT W/ FINAL 3/4", (3) LIFTS
- SEE NOTE ABOVE - BACK SIDE OF SECOND STORY BRICK PARAPET
- ABANDONED METAL ELEMENTS TO BE GROUND OUT & REPOINTED AS REQ'D
- STITCH BRICK TOGETHER - SEE STRUCTURAL



1 MARKET ST. ELEVATION
SCALE: 1/4" = 1'-0"